

Longleat Walk, Ingleby

Development

£139,995

**IH** INGLEBY HOMES





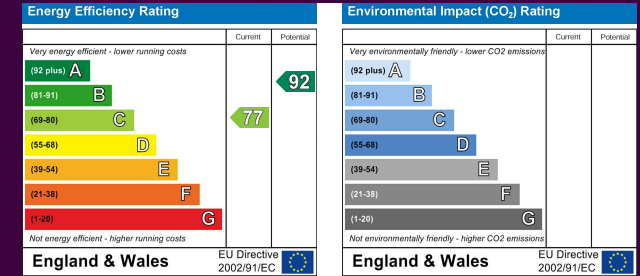
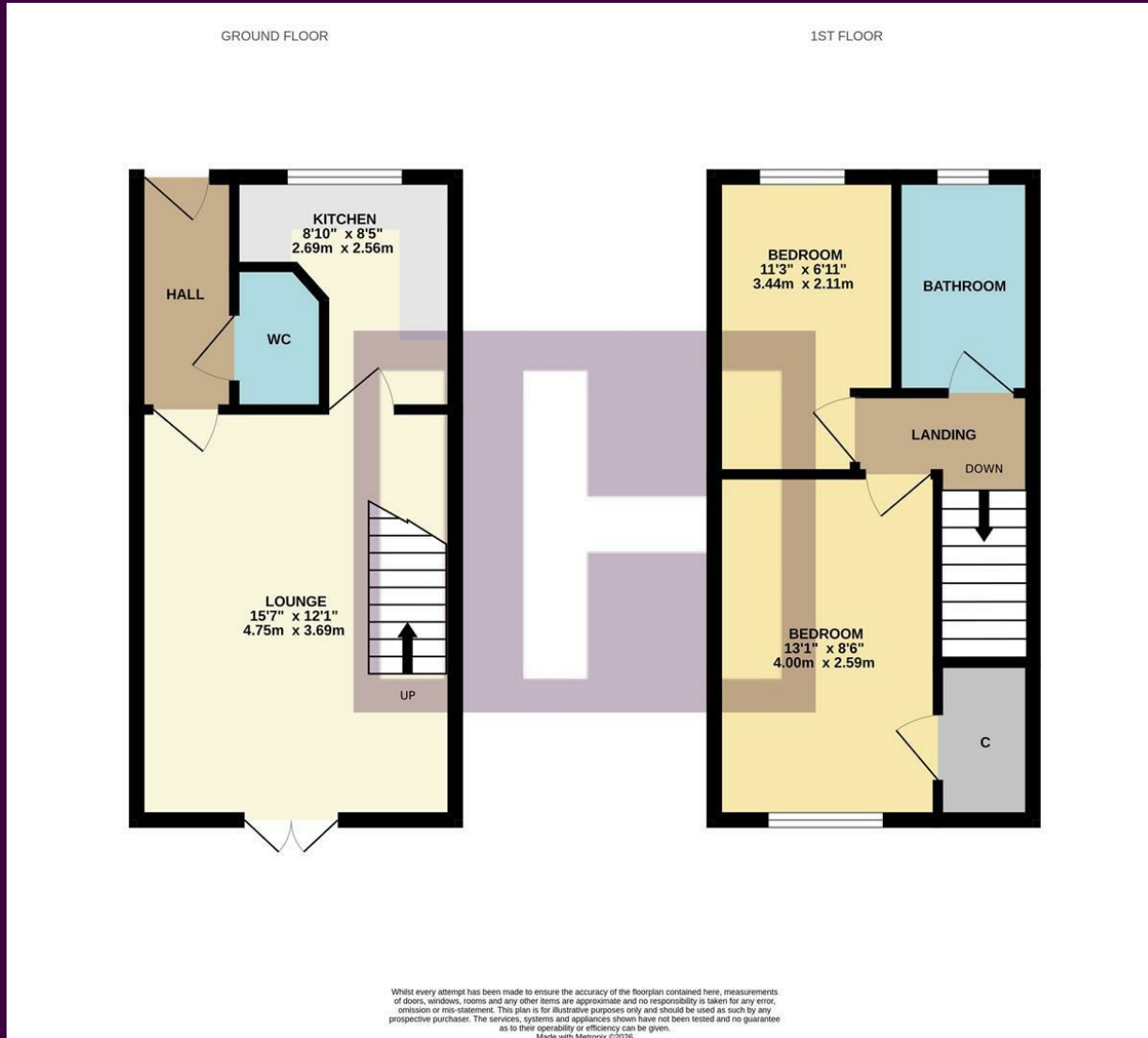
Modern, attractive and 'Turn-Key' ready, this two-bedroom property may prove to be of particular interest to the first time purchaser, and is available with 'No Forward Chain'.

Situated within the 'Heart' of Ingleby Barwick, close to fantastic amenities, transport links and 'highly regarded' schooling, whilst enjoying a landscaped, enclosed rear garden, two rear allocated parking bays, and a pleasant, tree-lined front outlook.

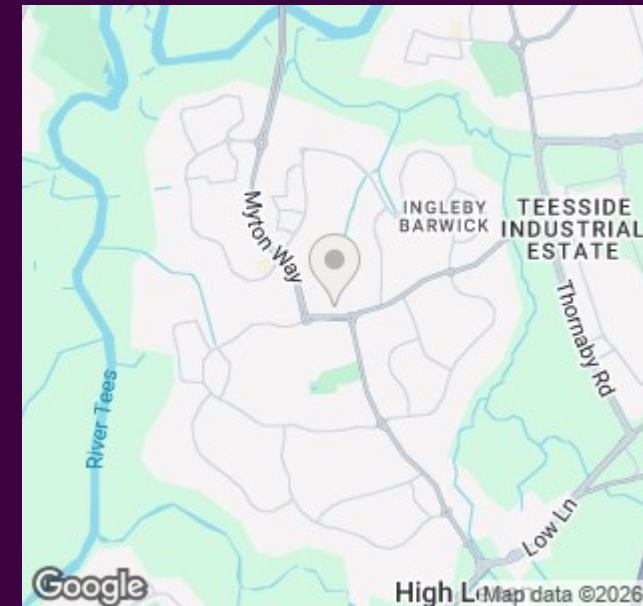


Internally, the accommodation briefly comprises an entrance hall, cloakroom/WC, spacious rear lounge with 'French' doors to the garden, and modern fitted kitchen to the ground floor. The first floor brings two good bedrooms, the larger primary with a generous storage closet built-in, separate family bathroom.

# The Layout



# The Location



Council Tax Band:

B

Tenure:

Freehold



- An impressive, two bedroom property
- Attractive, modern and worthy of early inspection
- Spacious rear lounge with 'French' doors to the garden
- Modern fitted kitchen and family bathroom
- Landscaped rear garden, rear parking, pleasant front outlook